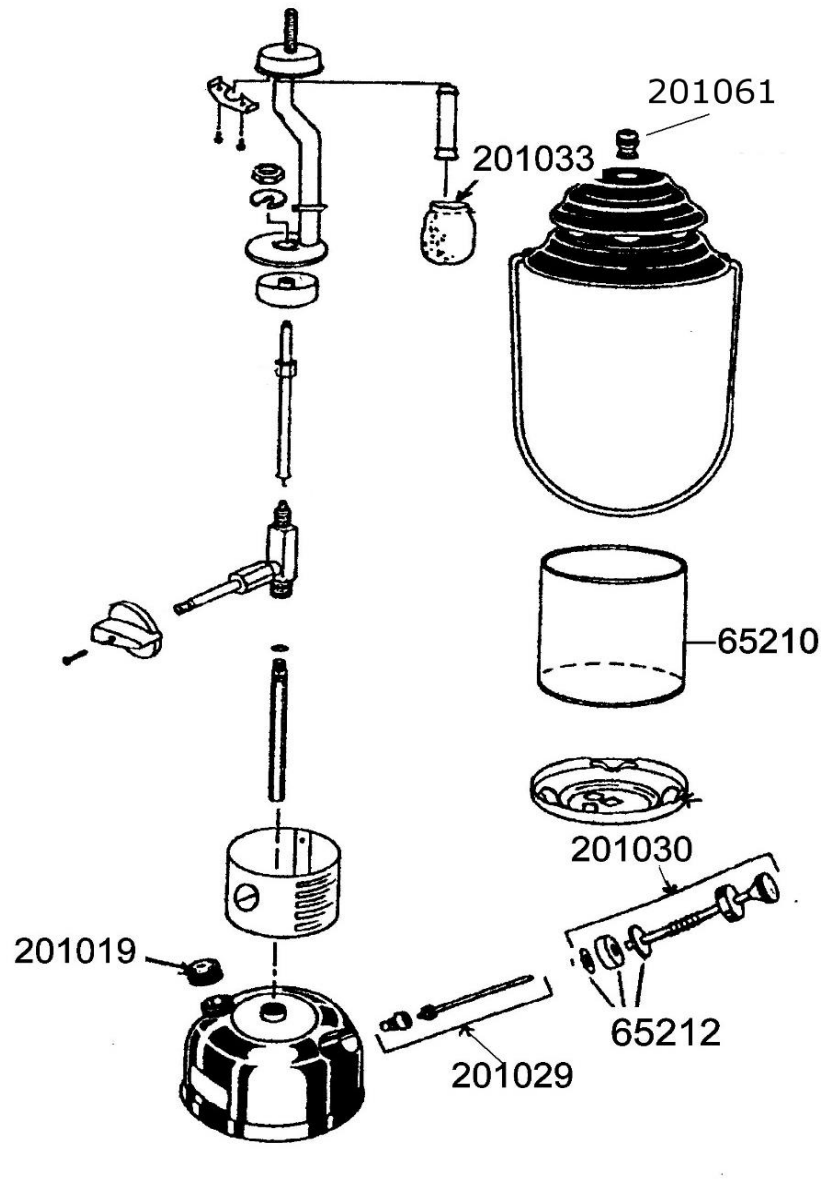


# KEROSENE LANTERN (214) LANTERNE A KEROSENE



SPARE PARTS REF.	POINTS	EN DESCRIPTIONS	FR DESCRIPTIONS
65210	110	GLOBE DIAMETER 110	VERRE DIAMETRE 110
65212	90	PUMP CUP AND CLIP (BLISTER PKG)	JOINT PISTON POMPE (BLISTER)
201018	70	FILTER FUNNEL	ENTONNOIR
201019	70	FILLER CAP	BOUCHON DE REMPLISSAGE
201029	50	AIR STEM AND CHECK VALVE	ENSEMBLE CLAPET DE RETENUE
201030	110	PUMP PLUNGER (OLD&CURRENT MOD)	PLONGEUR POMPE(ANCIEN&ACTUEL)
201033	50	MANTLE (X2)	MANCHON (X2)
201061	50	CAP SCREW (X2)	ECROU CHAPEAU (X2)